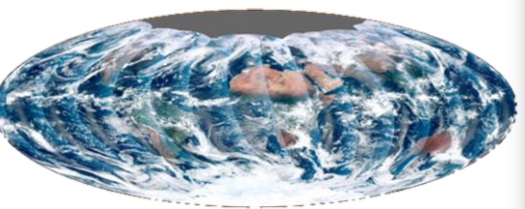
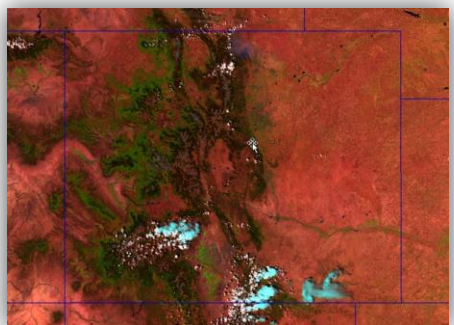


### Radiometric Calibration to Radiance, Reflectance/Thermal

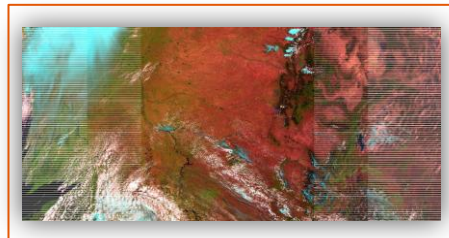
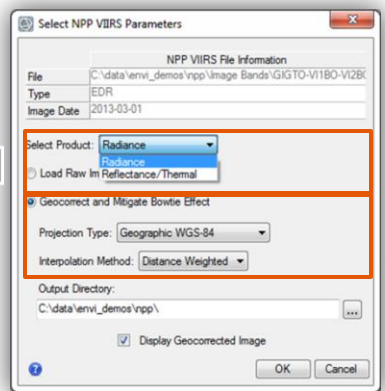
Imagery data, or Sensor Data Records (SDRs), for all 22 bands are supported.



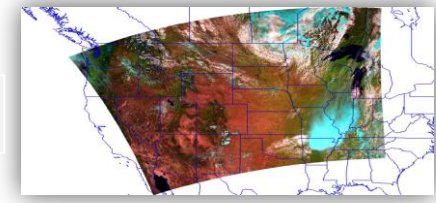
Equivalent to Level 1B data in previous missions



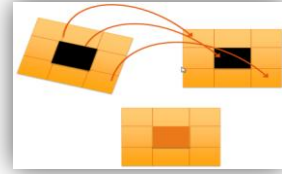
## Mission-Specific Sensor Support



=



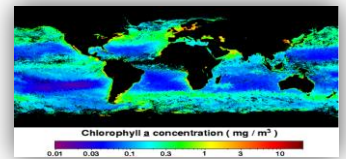
Step 1: Determine pixel size, tie points, and extents of the Image  
 Step 2: Map the GLT data values to a regular geographic grid  
 Step 3: Interpolation—Weighted Distance or NN



## Environmental Data Record (EDR) Support

Imagery data for a select set of bands will be provided as Environmental Data Records (EDRs), which is equivalent to Level 2 data in previous missions

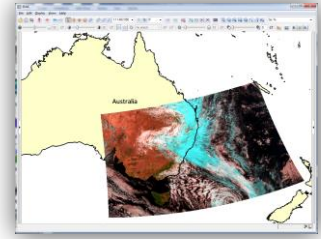
A wide variety of EDR data products will be produced, including but not limited to:



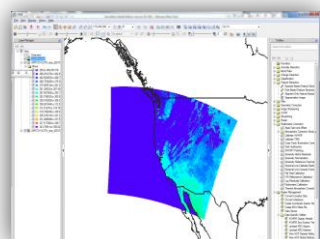
Chlorophyll Concentration



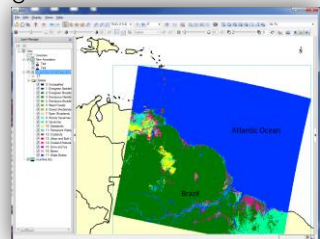
Day / Night Band



Optical and Thermal Bands



Land Surface Temperature



Land Surface Types

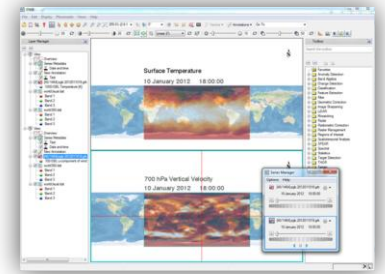
## Advanced Analysis Support

### Analysis Capabilities

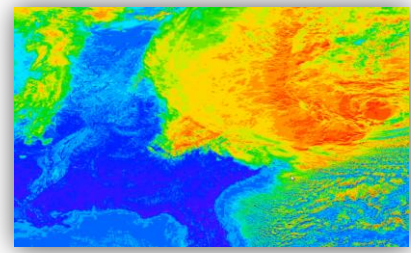
- > Classification
- > Feature Extraction
- > Change Detection
- > 60+ Spectral Indices
- > Time Series Analysis
- > Thermal Analysis

### Applications

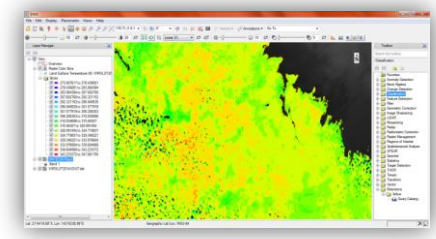
- > Earth Observation
- > Land Science
- > Ocean Monitoring
- > Weather Analysis
- > Temperature Studies
- > Climate Change Studies



Time Series Analysis



Climate Analysis



Land Science